



Pink Pilbara Breakfast

22nd August 2025

SPONSORSHIP PROSPECTUS



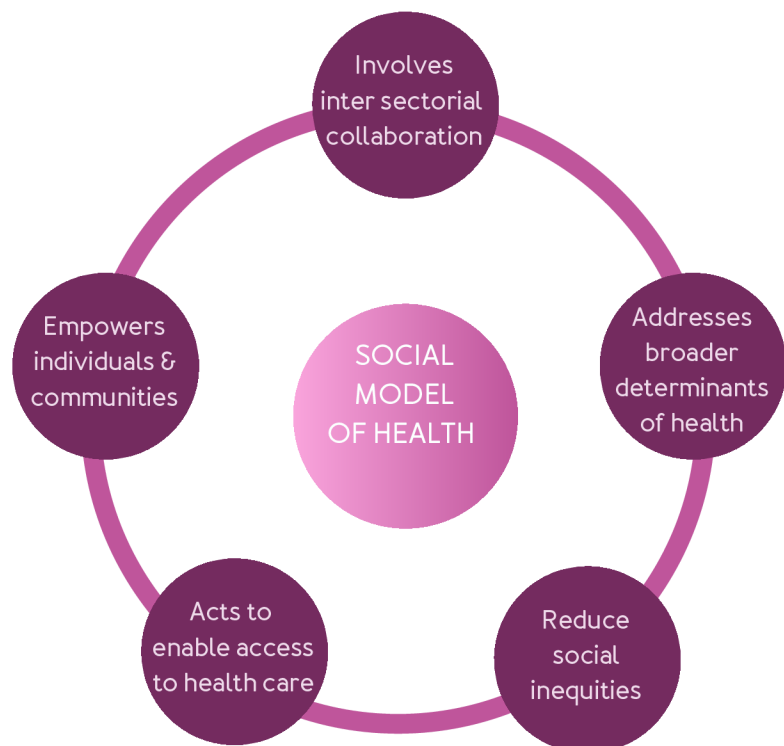
OUR STORY

Hedland Well Women's Centre (HWWC) has a long-standing reputation for providing quality, impactful and dynamic health and wellbeing services to thousands of women in the Hedland area.

Established in 1991, the Centre is an integral part of the town's social fabric, playing a pivotal role in providing a safe and welcoming platform for women seeking to access a range of unique and imperative services from a professional, multi-disciplinary health team.

HWWC is a community-based, not-for-profit organisation that offers free clinical services, mental health support, social connection programs, and health promotion to positively impact the health and wellbeing of the community.

At HWWC, we are dedicated to empowering and connecting the community. Services are based on a social model of health and are informed by data, research and community feedback.





OUR MISSION




To provide a comprehensive health and support launchpad connecting women to services that meet their evolving needs. We aim to improve the health and wellbeing of women by providing accessible and inclusive services with a key focus on health promotion activities. Our legacy of connecting women strengthens the social fabric of our community.

OUR IMPACT

HWWC strives to empower women to have control over their physical health, mental health and wellbeing.

The Centre is the only holistic health service in the Hedland area operating a social model of health fostered by the World Health Organisation.

HWWC addresses key community issues including:

- 01 Social isolation and mental health
 - 02 Gender-based inequities that contribute to poor health outcomes for women
 - 03 Gaps in services for mental health and women's healthcare
 - 04 Gender diversity in the workforce.
- 



OUR SERVICES

HWWC's services and programs are adaptive and holistic, designed to build and bolster social connections, health literacy, health skills, and individual empowerment.

Clinical Services

- Women's Health Clinic
- GP telehealth service
- Prevention and screening
- Allied telehealth services
- Cancer rehab physio
- Pelvic health physio
- Nurse training - Cervical
- Screen Testing

Health Promotion

- WoW Events
- Pink Pilbara Breakfast
- Health workshops
- Targeted education
- Disease specific promotion
- Digital campaigns

Home Away from Home

- Lifestyle and wellbeing programs for social isolation
- Advocacy support services
- Cancer Support Groups
- Non-host partner programs
- Community Morning Tea
- Safe and quiet space
- Cuppa and Chat

Mental Health & Wellbeing Services

- Counselling
- Telehealth support services
- Advocacy services
- Cancer support services
- Life Coaching



HISTORY OF PINK PILBARA BREAKFAST



Since 1999, HWWC has hosted an annual community fundraising event in support of cancer. After identifying a growing need for further on-the-ground support and services in Hedland, HWWC introduced an inhouse Cancer Support Service in October 2020.

In 2024, the generosity of the Hedland and Pilbara community raised \$150,000. These funds are being used to directly support this critical local service.

The ongoing success of the Pink Pilbara Breakfast is made possible through the generosity, compassion and support of the incredible Hedland community. HWWC is committed to seeing this project continue to improve the lives of women in the region.

VALUE OF YOUR SPONSORSHIP

People living in rural and remote areas are 20 to 30 per cent more likely to die within five years of a cancer diagnosis than those in metropolitan areas.

In the Pilbara, low participation rates are reported for bowel (23%), breast (30%) and cervical (31%) cancer screening processes.

Ref: Pilbara Needs Assessment 2022-2024, WA Primary Health Alliance

Cancer Prevention and Support Services

The uptake of and need for these services continue to rise annually. As HWWC transitions to a sustainable funding model, we invite you to join us to uplift and empower the Port Hedland community. This year, all money raised from sponsorship and donations will support two principal purposes:

01

Primary healthcare - the continuation of HWWC's clinical and health promotion programs that aim to prevent women's cancers including lifesaving screening, education and upskilling.

02

Secondary healthcare - the continuation of HWWC's clinical Cancer Support Services for local women who have been diagnosed with or are connected to cancer.



BECOME A SPONSOR



PLATINUM PACKAGE

Maximum two available

10 tickets to Pink Pilbara Breakfast

Recognition in North West Telegraph pre and post event

Company logo displayed on TV screen at event

Sponsorship announcement across social media platforms

Company logo on HWWC website (Pink Pilbara Breakfast webpage)

Opportunity to display company banner at event

Customised social media content

Company logo on event flyer

MC acknowledgement at opening and closing of event

Sponsorship acknowledgement on Triple M radio segment pre and post event

Opportunity for company to place a business advertisement in HWWC e-newsletter post event

Company logo on media wall as photo backdrop at event

INVESTMENT

\$12,000 + GST



BECOME A SPONSOR



GOLD PACKAGE

Maximum six available

8 tickets to Pink Pilbara Breakfast

Recognition in North West Telegraph pre and post event

Company logo displayed on TV screen at event

Sponsorship announcement across social media platforms

Company logo on HWWC website (Pink Pilbara Breakfast webpage)

Opportunity to display company banner at event

Company logo on event flyer

MC acknowledgement at opening and closing of event

INVESTMENT

\$6,000 + GST



BECOME A SPONSOR



SILVER PACKAGE

Maximum six available

4 tickets to Pink Pilbara Breakfast

Recognition in North West Telegraph pre and post event

Company logo displayed on TV screen at event

Sponsorship announcement across social media platforms

Company logo on HWWC website (Pink Pilbara Breakfast webpage)

Opportunity to display company banner at event

Company logo on event flyer

INVESTMENT

\$3,000 + GST



BRONZE PACKAGE

Maximum twelve available

2 tickets to Pink Pilbara Breakfast

Recognition in North West Telegraph pre and post event

Company logo displayed on TV screen at event

Sponsorship announcement across social media platforms

INVESTMENT

\$1,500 + GST

SPONSORSHIP PACKAGES

BENEFITS	PLATINUM	GOLD	SILVER	BRONZE
Availability	Maximum of 2	Maximum of 6	Maximum of 6	Maximum of 12
Investment (plus GST)	\$12,000	\$6,000	\$3,000	\$1,500
Tickets to Pink Pilbara Breakfast	10	8	4	2
Recognition in North West Telegraph pre and post event	✓	✓	✓	✓
Company logo displayed on TV screen at event	✓	✓	✓	✓
Sponsorship announcement across social media platforms	✓	✓	✓	✓
Company logo on HWWC website (Pink Pilbara webpage)	✓	✓	✓	
Opportunity to display company banner at event	✓	✓	✓	
Company logo on event flyer	✓	✓		
MC acknowledgement at commencement and closing of event	✓	✓		
Customised social media content	✓			
Sponsorship acknowledgement on Triple M radio segment pre and post event	✓			
Opportunity for company to place a business advertisement in HWWC e-newsletter post event	✓			
Company logo on media wall as photo backdrop at event	✓			

SPONSORSHIP APPLICATION FORM

PINK PILBARA BREAKFAST



Thank you for your consideration of a sponsorship opportunity for the Pink Pilbara Breakfast.

To proceed with sponsorship please fill in below details:

Company name	<input type="text"/>
Postal address	<input type="text"/>
Phone number	<input type="text"/>
Authorising representative	<input type="text"/>
Position	<input type="text"/>
Email	<input type="text"/>

Please tick level of sponsorship / donation:

<input type="checkbox"/> PLATINUM \$12,000*	<input type="checkbox"/> GOLD \$6000*	<input type="checkbox"/> SILVER \$3000*	<input type="checkbox"/> BRONZE \$1500*
--	--	--	--

I acknowledge that we will be invoiced for \$ _____ for sponsorship of the Pink Pilbara Breakfast.

Signature	<input type="text"/>
Date	<input type="text"/>

*Please email completed form along with your company logo to
healthpromotion@wellwomens.com.au by June 20th 2025.*

**Plus GST*



THANK
YOU!



Contact

Phone	9140 1124
Website	www.wellwomens.com.au
Email	assistant@wellwomens.com.au